

# **MARS Manual**

---

## Installation Guide

Publication date March 2023. All rights reserved. Duplication, publication, or distribution of this material in any form by any means without the written permission of Molecular Discovery Ltd., is expressly forbidden. Please, for further information contact: [support@moldiscovery.com](mailto:support@moldiscovery.com)

## 1.1 General Information before installation

**MARS** is distributed through the Molecular Discovery web site (<http://www.moldiscovery.com>).

**MARS** is distributed for the Windows platform in the form of a self-extracting executable file (please note that, depending on the operating system version, administrative privileges may be required).

## 1.2 Software Prerequisites

**MARS** can be installed only on a 64bit Windows operating system.

Please be sure that the following software is pre-installed in the system:

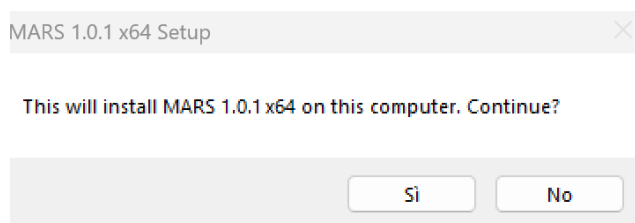
Brand	Requirements	Installation tips
AGILENT	Microsoft .Net Framework 4.0 : The different framework versions are installed at C:\Windows\Microsoft.NET\Framework please be sure that the v4.0.30319 is present in the system. If missing it can be downloaded at the following Microsoft page: <a href="http://www.microsoft.com/en-us/download/details.aspx?id=17851">http://www.microsoft.com/en-us/download/details.aspx?id=17851</a>	
THERMO	To read Thermo data install <a href="#">MSFileReader 3.1 SP3</a> and then <a href="#">MSFileReader 3.1 SP4</a> , both in administrator mode. Link: <a href="https://thermo.flexnetoperations.com/control/thermo/download?cert_num=725586487&amp;element=8394067&amp;dkey=11026487&amp;plne=820577">https://thermo.flexnetoperations.com/control/thermo/download?cert_num=725586487&amp;element=8394067&amp;dkey=11026487&amp;plne=820577</a>  <b>Please note</b> that in some PC configurations version <u>3.1</u> of the library does not work as expected. In that case the suggested solution is to install version <u>3.0</u> of the same library.	
WATERS	Requires <a href="#">Visual C++ Redistributable 2012</a> , <a href="#">Visual C++ Redistributable 2013</a> and <a href="#">Visual C++ Redistributable 2015</a> to be installed	
BRUKER	The CompassXtract package must be installed for converting Bruker files. This package is available at the following link: <a href="https://www.bruker.com/service/support-upgrades/software-downloads/mass-spectrometry.html">https://www.bruker.com/service/support-upgrades/software-downloads/mass-spectrometry.html</a>	
SCIEX	The converter can be downloaded from the following link: <a href="http://download.moldiscovery.com/MMS+Wiff+Access+Patch+2-win64.exe">http://download.moldiscovery.com/MMS+Wiff+Access+Patch+2-win64.exe</a> .	The MMS Wiff Access Patch needs Microsoft .Net Framework 4.0 to be installed.

	Visual Studio 2012 redistributable packages 64bit must be installed on the system: this package can be retrieved at <a href="https://www.microsoft.com/en-us/download/details.aspx?id=30679">https://www.microsoft.com/en-us/download/details.aspx?id=30679</a>	
--	---	--

- FOR USERS THAT WANT TO USE THE REPORT GENERATION FEATURE Microsoft Word must be installed to be able to generate the report in .docx format.

## 1.3 STEP 1

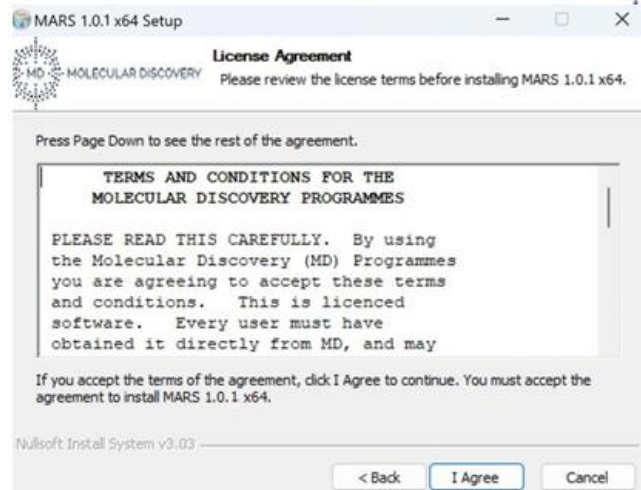
To start the Setup Wizard application double-click the installer icon. A dialog window is issued, prompting the user for confirmation:



The welcome page of the setup wizard is then shown:

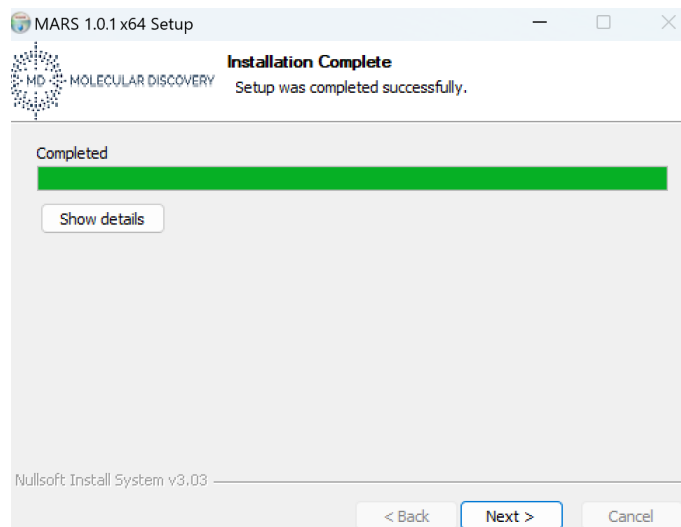


Click on the Next button to proceed to the License Agreement page:



Please read the shown terms and conditions, then click the “I Agree” button to accept the licensing terms and continue the installation procedure.

The “Choose Install Location” page allows the users to customize the installation path. Provide a different file system location if needed and then click the Install button to start the actual installation process:



Once the installation is completed click the Next button to move to the last page:

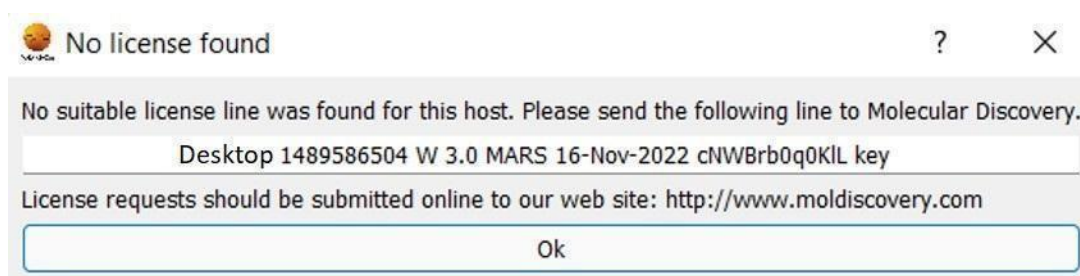


The installation is finished. Click the Finish button to close the setup wizard.

## 1.4 STEP 2

Use of the installed programs requires a suitable license line for MARS and another one for the DB Manager.

On their first run, and as long as no valid license is found for the current host, MARS and the DB Manager will show a dialog window like this:



Please copy the two lines shown verbatim and send it to Molecular Discovery. License requests should be submitted online to the Molecular Discovery web site <http://www.moldiscovery.com>.

We will send you back a similar line containing the license key. License lines should be copied verbatim to the license.txt file, located in the Mars install folder. As long as this file does not contain a suitable license line, MARS will keep showing the above information or an error message and will not start.

Please notice that *license lines are unique for each system*. If you repeat the installation on a different host you will need a new license line.